

A multicriteria decision-making method for additive manufacturing process selection

Diqian Ren and Jun-Ki Choi

Department of Mechanical and Aerospace Engineering, University of Dayton, Dayton, Ohio, USA, and

Kellie Schneider

Department of Engineering Management, Systems, and Technology, University of Dayton, Dayton, Ohio, USA

Abstract

Purpose – Because of the significant differences in the features and requirements of specific products and the capabilities of various additive manufacturing (AM) solutions, selecting the most appropriate AM technology can be challenging. This study aims to propose a method to solve the complex process selection in 3D printing applications, especially by creating a new multicriteria decision-making tool that takes the direct certainty of each comparison to reflect the decision-maker's desire effectively.

Design/methodology/approach – The methodology proposed includes five steps: defining the AM technology selection decision criteria and constraints, extracting available AM parameters from the database, evaluating the selected AM technology parameters based on the proposed decision-making methodology, improving the accuracy of the decision by adopting newly proposed weighting scheme and selecting optimal AM technologies by integrating information gathered from the whole decision-making process.

Findings – To demonstrate the feasibility and reliability of the proposed methodology, this case study describes a detailed industrial application in rapid investment casting that applies the weightings to a tailored AM technologies and materials database to determine the most suitable AM process. The results showed that the proposed methodology could solve complicated AM process selection problems at both the design and manufacturing stages.

Originality/value – This research proposes a unique multicriteria decision-making solution, which employs an exclusive weightings calculation algorithm that converts the decision-maker's subjective priority of the involved criteria into comparable values. The proposed framework can reduce decision-maker's comparison duty and potentially reduce errors in the pairwise comparisons used in other decision-making methodologies.

Keywords Additive manufacturing, Multi-criteria decision making, Rapid investment casting

Paper type Research paper

1. Introduction

Almost 40 years have passed since Charles Hull invented the first 3D printer in 1983 (Hull, 2015). Since then, 3D printing [also known as additive manufacturing (AM)] has become a technology that cannot be ignored in today's manufacturing decisions. AM refers to a technology that creates parts by adding materials layer by layer. This process can transfer a product designer's idea into a physical product more rapidly and simply than traditional manufacturing processes. AM also has some other advantages over traditional manufacturing, such as unlimited geometry complexity, flexible inventory, shorter manufacturing lead times and lower costs for low-volume production (MacDonald and Wicker, 2016; Savolainen and Collan, 2020). It has been widely adopted in such areas as rapid prototyping, medical implants, automotive, aerospace, sports and construction industries (Tofail et al., 2018). Sharing the same core concept of adding material successively as the first 3D printer, many new 3D printing

technologies have been developed. Based on their characteristics, these technologies are generally classified into seven categories, all of which are discussed in more detail in the following section: binder jetting (BJ) (Do et al., 2017; Gonzalez et al., 2016); direct energy deposition (DED) (Stender et al., 2018; Javidani et al., 2017); material extrusion (ME) (Dhinakaran et al., 2020; Weng et al., 2016); material jetting (MJ) (Yap et al., 2017; Vdovin et al., 2017); powder bed fusion (PBF) (Khairallah et al., 2016; Allison et al., 2019); sheet lamination (SL) (Norfolk and Johnson, 2015; Qi Zhang, 2018; Bhatt et al., 2019); and vat polymerization (VP) (Bártolo and

© Diqian Ren, Jun-Ki Choi and Kellie Schneider. Published by Emerald Publishing Limited. This article is published under the Creative Commons Attribution (CC BY 4.0) licence. Anyone may reproduce, distribute, translate and create derivative works of this article (for both commercial and non-commercial purposes), subject to full attribution to the original publication and authors. The full terms of this licence may be seen at <http://creativecommons.org/licenses/by/4.0/legalcode>

The authors appreciate Thad Kacsandy and Brian Stitt in the Additive Manufacturing group at the University of Dayton Research Institute (UDRI) for providing consulting about AM technologies and summer research internship opportunities to gather data and generate the methodology proposed in this study.

Received 6 November 2021

Revised 31 March 2022

17 July 2022

Accepted 21 September 2022

The current issue and full text archive of this journal is available on Emerald Insight at: <https://www.emerald.com/insight/1355-2546.htm>



Rapid Prototyping Journal
28/11 (2022) 77–91
Emerald Publishing Limited [ISSN 1355-2546]
[DOI 10.1108/RPJ-11-2021-0302]

Gibson, 2011; Yang *et al.*, 2019). Although some AM methods are mature, the AM industry is still thriving; many 3D printing processes are currently available, and more are emerging and developing, such as metal fused deposition modeling (metal FDM), ARBURG plastic freeforming and multi jet fusion (Ramazani and Kami, 2022; Mele *et al.*, 2022; Avanzini *et al.*, 2022). When selecting a 3D printing method for a specific application, decision-makers need to consider many aspects, such as mechanical, chemical and physical properties, 3D printers' build volume, postprocessing, resolution, environmental impact, production time and cost. Rigorous consideration of these decision variables is crucial to optimizing the complicated AM technology selection process. Many researchers have addressed the important decision parameters involved in the AM selection process and facilitated that process by developing some advisory tools based on different multicriteria decision-making methods. These methods include analytic hierarchy process (AHP) (Lokesh and Jain, 2010; Armillotta, 2008; Kadkhoda-Ahmadi *et al.*, 2019; Zaman *et al.*, 2018; Mançanares *et al.*, 2015; Liu *et al.*, 2020), analytic network process framework (ANP) (Vimal, 2016), technique for order preference by similarity to ideal solution (TOPSIS) (Byun and Lee, 2005), VlseKriterijuska Optimizacija I Komoromisno Resenje (VIKOR) (Liao *et al.*, 2014), fuzzy AHP (Zhou and Chen, 2010), fuzzy logic (Khrais *et al.*, 2011), fuzzy TOPSIS (Vahdani *et al.*, 2011), fuzzy VIKOR (Vinodh *et al.*, 2014), fuzzy information aggregation operators (Qin *et al.*, 2020), fuzzy decision (Mahesh *et al.*, 2005), graph theory (Rao and Padmanabhan, 2007), hybrid decision-making tools (Anand, 2018; Borille *et al.*, 2010; Zhang, 2014; Wang, 2018), fuzzy axiomatic design (Zheng *et al.*, 2017) and posteriori articulation of preferences approach (Wang, 2017).

A common misconception regarding these tools, however, is that the precise weighting of various criteria is easy to obtain from decision-makers. Yet, precisely reflecting decision-maker's requirements numerically is not a straightforward matter, and translating decision-maker's preferences into numbers in complicated decision-making cases often leads to errors and biases in weighting that can skew the final selection result. The new decision-making tool described in this article includes a special process for calculating the weightings of the criteria that more accurately translates the decision-maker's demands into calculable numbers.

2. Literature review

This section reviews the current literature on existing and commercial AM technologies, raw materials and decision-making tools.

2.1 Additive manufacturing technologies

This section briefly introduces the diversity of the AM processes and reveals the necessity of decision-making tools under complicated circumstances, while not all the features are discussed. Certain features should be covered when critical for a specific AM process selection. For example, in the design stage, the optimization of parts geometries is essential and could affect the environmental impacts (CHEN *et al.*, 2016; Xiong and Chen, 2021; Mele *et al.*, 2019a). However, they are

not considered for some cases when the decision-maker does not use them to make a decision.

Currently, the most popular 3D printing options are BJ, DED, ME, MJ, PBF and VP. These six AM processes dominate today's 3D printing market and a seventh, SL, is widely used for rapid prototyping. Each 3D printing option includes several subsets of techniques, many of which are similar across technologies, even though each technology also has unique features that reflect its specific principles and lead to differences in the attributes of the printed parts.

In the first of these processes, BJ is an AM method that drops a liquid bonding agent to bind powder particles. A BJ printed part is developed by strategically moving the print head and depositing the bonding agent (Meteyer *et al.*, 2014). The parts printed from BJ process do not need to be anchored on a build plate, which saves powder material and can be critical when printing with costly materials. A common application of BJ is producing a ceramic part. Recent studies show that the bulk density of BJ printed parts has improved (Díaz-Moreno *et al.*, 2019; Wheat *et al.*, 2018), approaching fully dense stainless steel parts and suitable for metallic foam structures. BJ's advantages also include a high resolution that provides the possibility of creating detailed finishes.

DED processes use focused energy to melt materials directly when adding them layer by layer to the workpiece. The raw materials are in the form of a wire or powder, and the concentrated energy source is typically a laser, electron beam or arc light (Gibson *et al.*, 2015). More materials are involved in DED printing than in some of the other processes. The fatigue performance of DED printed parts has also improved (Gordon *et al.*, 2019). Recent research has shown that DED's powder capture efficiency changes as the working distance changes and can improve as the material's surface temperature increases (Haley *et al.*, 2019).

ME is similar to the traditional plastic extrusion process in that both processes need to melt the material being molded. A common ME technology is FDM, where a nozzle will deposit the material in a soft and semiliquid state onto a build platform, a small amount each time to produce the 3D product. The production rate is lower than that in the extrusion process, but ME can produce more complex parts. Generally, the cost of ME is the lowest among all the AM technologies, contributing to its being the most popular 3D printing method. Considerable efforts have been dedicated to creating new materials and improving the printing speed, process parameters and thermal activities of the FDM process (Luo *et al.*, 2020; Costa *et al.*, 2017).

MJ is a group of AM processes that selectively jet liquid raw materials. If those materials are plastics, they are usually light-sensitive and are ultraviolet (UV)-cured right after deposition. MJ's printing speed is faster than many AM technologies (Gaynor *et al.*, 2014), and it has the ability to print different materials simultaneously. This feature offers great opportunities to create new materials for various applications and to print microstructures (Cheng *et al.*, 2020; Dilag *et al.*, 2019). For example, some researchers have employed MJ's ability to simultaneously print different materials to print fluid circuit components (Sochol *et al.*, 2016).

PBF is a series of AM technologies that places a thin layer of powder raw material on a platform called the powder bed. After fusing the material at selected positions, another thin layer of powder material is spread over the previous layer, a process that is repeated to print the 3D part. The energy source can be a laser, electron beam or infrared lamp (Mele *et al.*, 2019b). Postprocessing is usually necessary for PBF, such as blowing away residual powders or cutting the printed part off the building platform (King *et al.*, 2014). The different microstructures cause the bulk anisotropy of PBF parts (Lowther *et al.*, 2019), and recent research revealed that this bulk anisotropy can be reduced by applying a large beam width (Shi *et al.*, 2020).

VP is the process where the polymerization of liquid photosensitive resin takes place in a vat. The resin can undergo a chemical change initiated by either a laser or arc light source to form a solid 3D part. There are several types of VP, such as stereolithography, digital light process and continuous liquid interface product (Tumbleston *et al.*, 2015). Recent research indicates that for certain parts geometries, such as length/diameter ratio is higher than 2, the “bottom-up” and “top-down” print methods could lead to different results. For example, “bottom-up” parts may have more defects (Santoliquido *et al.*, 2019). Table 1 summarizes the major pros and cons of these AM technologies.

2.2 Additive manufacturing materials

This section introduces the AM materials typically used for the mature AM solutions that are the scope of this study. Material can affect the selection of AM technology for a specific application because a process can often produce several types of materials. Sometimes, when the decision-maker has already designated the material, some AM processes can be canceled from the alternative list if they are not capable of printing the selected material. In addition, the same material printed by different processes could lead to a significant difference in the parts. This study evaluates this point when required decision-making data is collected for a specific application. A material’s performances under different AM processes are reflected in collecting the corresponding data.

The first of these materials under the scope in this study are polymers that have many advantages that other materials cannot match, such as their lightweight, high strength-to-weight ratio and resistance to corrosion. Thermoplastics are widely used for FDM, including polylactic acid, acrylonitrile

butadiene styrene, acrylonitrile styrene acrylate and nylon 12 (Lee *et al.*, 2017). Thermosets, which are the main materials used for MJ and VP, must be UV-curable and in a liquid state; normal AM thermosets are epoxies, acrylates and acrylics. The parts printed from these photosensitive thermosets, however, degrade over time and start to lose some of their mechanical properties (Bourell *et al.*, 2017).

Metals and alloys are popular engineering materials because of their excellent mechanical properties, such as tensile strength, hardness and elongation. Typical metal materials for AM are stainless and tool steel, aluminum alloys, titanium and its alloys and nickel-based alloys (Ngo *et al.*, 2018; Herzog *et al.*, 2016). The quality of 3D printed parts is determined by powder quality, whose flowability, particle size and surface morphology are influenced by metal powder manufacturing processes (Vock *et al.*, 2019). It is also easier to change the composition of the parts by changing the ratio of the mixed alloy powders in AM than in traditional manufacturing processes (DebRoy *et al.*, 2018). Researchers have been improving the mechanical properties of metal AM materials and creating new metal AM materials (Carroll *et al.*, 2015; Shafraneck *et al.*, 2019).

Ceramic materials have great resistance to chemicals, low electrical conductivity and high strength, although they are brittle. All of the main AM technologies discussed above can print ceramic parts (Wang *et al.*, 2019a) through direct or indirect ceramic printing methods. Direct methods sinter the material directly to form a part, while indirect methods print a green body and then sinter it (Chen *et al.*, 2019). Ceramic AM solutions can print a wide range of ceramics, such as boron carbide, alumina and zirconia (Yang and Miyajima, 2017).

2.3 Multicriteria decision-making tools

Multicriteria decision-making (MCDM) tools are designed to help decision-makers solve complex AM process selection problems. This section briefly reviews current MCDM methods, from which our research adopted some concepts to create a novel pairwise comparison MCDM framework that can translate decision-maker’s subjective priorities more efficiently.

Among current methods, the AHP uses a pairwise comparison in complex decision-making processes (Saaty, 2001; Saaty, 1990). The advantages of AHP are its modeling of a real problem in a hierarchical manner, ability to translate verbal judgments and guaranteed consistency (Ishizaka and

Table 1 Comparison of advantages and disadvantages of main AM technologies

AM Technologies	Advantages	Disadvantages
VP	Low cost, high-detail surfaces, high printing speed	Low mechanical properties, parts degrade over time, limited materials
FDM	Low cost, easy to use, simple post-processing if necessary	Low mechanical properties, low resolution, low accuracy
BJ	No support structures needed, high resolution, cost effective	Difficult to print full-density parts, low mechanical properties, high porosity
MJ	High accuracy, high printing speed, full-color parts	Costly, low mechanical properties, parts degrade over time
DED	Large build size without support structures, high printing speed with full density, cost effective	Low resolution, low accuracy, rough surface
PBF	Full-density parts, high mechanical properties, high resolution	Expensive, low printing speed, post-processing required

Labib, 2011). A recent study has shown that combining a problem structuring approach with the AHP process can improve the reliability of AHP assessments (Marttunen *et al.*, 2017).

The best worst method (BWM) uses a unique algorithm to determine the weights of criteria, picking and using the best and the worst criteria based on their desirability (Rezaei, 2016; Rezaei, 2015). The benefits of BWM include its improved consistency, relative ease to use and ability to combine smoothly with other MCDM methods (Rezaei, 2015). Created by Jafar Rezaei in 2015 (Rezaei, 2015), the BWM is a relatively young MCDM tool but a robust one that has been used in many areas, such as the airline industry, supply chain assessment and education (Badri Ahmadi *et al.*, 2017; Gupta, 2018; Salimi and Rezaei, 2016).

Using linear normalization, VIKOR is good at comparing alternatives with opposing criteria and different units (Opricovic and Tzeng, 2007). Because of its ability to handle complex multicriteria optimization, VIKOR has been widely used in the areas of renewable energy, sustainability (Mardani *et al.*, 2016) and material selection (Jahan *et al.*, 2011).

The ANP is an extension of the AHP that considers component dependence and feedback. The weightings delivered by the ANP algorithm assess the interaction of the criteria involved (Saaty and Vargas, 2013). ANP has been applied in such areas as human resources management, energy management, business and financial management, design and engineering and manufacturing systems (Kheybari *et al.*, 2020).

Preference ranking organization method for enrichment evaluations (PROMETHEE) offers simplicity, clearness and stability but does not elaborate the weightings of criteria (Brans *et al.*, 1986), a weakness that can be improved by adopting the weightings process from other decision-making tools. PROMETHEE can also be enhanced by applying some features of AHP (Macharis *et al.*, 2004). According to a review paper, PROMETHEE has been applied in such areas as environment management, hydrology and water management, business and financial management, chemistry, logistics and transportation and manufacturing and assembly (Behzadian *et al.*, 2010).

TOPSIS is among the most widely used multicriteria decision-making solutions, especially within the supply chain

and logistics, design, engineering and manufacturing systems (Behzadian *et al.*, 2012; Zyoud and Fuchs-Hanusch, 2017). A comparison of fuzzy TOPSIS and fuzzy AHP in a supplier selection scenario found that fuzzy TOPSIS had a better performance in most cases (Lima Junior *et al.*, 2014).

The introduced MCDM tools have their special strengths and limitations, as shown in Table 2. They have been applied to solve decision-making problems across a wide range of fields; some of them are used to select AM processes and demonstrate the feasibility. Some of these MCDM methods rank the alternatives through pairwise comparisons. However, when the pairwise comparisons are conducted, the certainty of each pairwise comparison is not collected or used. This information, the direct certainty of every pairwise comparison, is a part of the decision-making process and can have an effect on the final selection result. This work proposed a MCDM tool that applies this direct certainty in the decision-making process to evaluate the alternatives, especially for the selection of AM process. To the best of our knowledge, no work has been performed that collects the direct certainty. The proposed tool gathers the direct certainty from the decision-maker and interprets this information to apply in determining criteria weightings, which is a primary step among decision-making tasks. It is suitable for decision-making tasks when uncertainty is a critical factor affecting the decision.

3. Methodology

Pairwise comparison can be used in many MCDM methods to determine the weightings of criteria, such as AHP, BWM and VIKOR. When a pairwise comparison is made, the corresponding certainty of this judgment appears. This direct certainty reveals the decision-maker's reliability of the judgment. Direct certainty is valuable information for decision-making because it shows the reliability of the judgments. When a set of pairwise comparisons are conducted, some pairwise comparisons could have high certainty, which means the decision-maker feels more confident about these judgments. Because the judgments with high certainty express the decision-maker's preference more precisely and clearly, they should play a more important role, compared with judgments with low certainty. If there is a scale to measure the direct certainty, the certainty can be required directly from the decision-maker when the comparisons are executed. The direct certainty is critical to the weighting

Table 2 Brief summary of the advantages and disadvantages for introduced MCDM tools

MCDM tools	Advantages	Disadvantages
AHP	Using a hierarchy system to evaluate tangible and intangible factors to achieve a structural solution	Large number of comparisons when the problem is complicated
BWM	High consistency for pairwise comparisons, yet few steps, and judgments	It employs parsimonious AHP, which may cause unknown side effects
VIKOR	Obtaining compromise solution at the beginning of system design	Improper preference ranking may occur because of the use of VIKOR's maximum group utility calculation equation
ANP	The interdependence of alternatives is included by a network structure	The different effects between clusters could be neglected
PROMETHEE	The criteria does not need to be proportionate; easy to apply	Additional tool is needed for weighing the criteria preference
TOPSIS	Simple process based on logic of human choice study	The relevant importance of solution distance is not considered

Sources: Al-Harbi (2001), Emovon and Oghenyerovwho (2020); Moslem *et al.* (2020), Opricovic and Tzeng (2004); Velasquez and Hester (2013), Jahan *et al.* (2011); Huang *et al.* (2009), Opricovic and Tzeng (2007); Shih *et al.* (2007)

calculation, but it was ignored before, or there was not an effective measure tool for the direct certainty. A measuring tool for direct certainty is first developed for this purpose, and the weightings with the consideration of the judgments' direct certainty are calculated in this methodology.

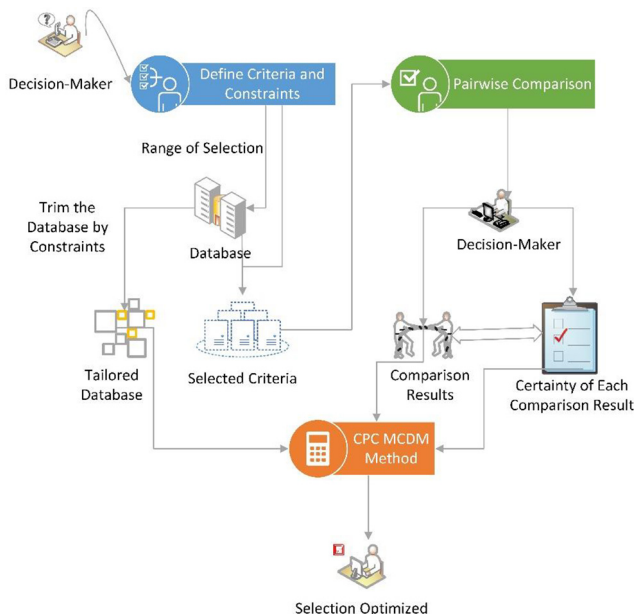
In addition, the demands from decision-makers can be classified into two categories: constraints and criteria. Constraints are the primary demands that must be met. Criteria are the demands that are not mandatory but can be used to judge. Constraints can screen the alternatives, and criteria can be used to compare the screened alternatives. A characteristic can be a constraint and a criterion at the same time. The purpose of classifying demands is not only to screen the alternatives but also to delete the constraints from pairwise comparisons. Because in some close comparisons, unnecessary criteria can change the final selection result. Meanwhile, the clarification of criteria and constraints reduces the following pairwise comparison load.

For these reasons, a novel and comprehensive framework is proposed to solve the AM process selection problem called the certainty pairwise comparison (CPC) decision-making tool. This method first uses a new measuring tool to determine direct certainty and then calculates the weightings with the consideration of the judgments' direct certainties. The framework also constructs a system that can reduce a decision-maker's comparison duty and potentially reduce the errors of a decision-maker's pairwise comparisons.

3.1 Certainty pairwise comparison decision-making steps

Figure 1 shows the steps of the proposed CPC decision-making process. The first step is defining the decision criteria and constraints, during which a decision-maker selects the range of desired parameters, such as the printing speed and the tensile strength of the part. If a constraint is numerical, at least one of the maximum or minimum quantities is mandatory. Next, based on the selected constraints and criteria, the related data is

Figure 1 Schematic diagram of the proposed AM selection process



extracted from the database, which includes all the information on AM technologies and materials to construct a tailored subdatabase. In the third step, a decision-maker performs the pairwise comparisons of the selected criteria and, by applying the direct certainty measure tool, determines the certainty of each comparison. In the fourth step, by applying the CPC weighting calculation method, the weightings can be acquired with the contribution of the judgments' certainties. Finally, the CPC suggests the optimized solution based on the integration of the weightings and the required criteria information.

3.2 Theoretical backgrounds

Assume there are m criteria. Once the pairwise comparisons are made, a result matrix A is obtained as in equation (1):

$$A = \begin{bmatrix} a_{11} & \cdots & a_{1m} \\ \vdots & \ddots & \vdots \\ a_{m1} & \cdots & a_{mm} \end{bmatrix} \quad (1)$$

where a_{ij} is the preference of criterion i to j , it can be obtained based on a pairwise comparison scale, such as Saaty's (1988) scale. If $a_{ij} = 1$, that means that i and j have the same importance; if $a_{ij} > 1$, i is more important than j . The certainty of an arbitrary judgment a_{ij} is defined as the reliability of the pairwise comparison of criterion i to j , represented by c_{ij} . The certainty, which must be assigned by the decision-makers who make the comparison, quantitatively reflects the reliability of a judgment. The certainty scale of values is shown in Table 3.

All the values between 20% and 100% are acceptable, depending on the certainty of a judgment. For example, if the decision-maker is more than 80% but less than 100% confident in a judgment, any value between 80% and 100% can be assigned based on the certainty level. If certainty is lower than 20%, a suggestion of reconsidering this judgment will be given. These certainty values make up the certainty matrix C , which has the same dimension as result matrix A .

Equation (2) is the certainty matrix C :

$$C = \begin{bmatrix} c_{11} & \cdots & c_{1m} \\ \vdots & \ddots & \vdots \\ c_{m1} & \cdots & c_{mm} \end{bmatrix} \quad (2)$$

where the arbitrary element c_{ij} corresponds to the certainty of the judgment a_{ij} .

Letting w_i represent the optimized weightings, which are also decision variables deciding on weights based on preferences and their certainty. The absolute difference between a decision-maker's comparison result and optimized weighting comparison is expressed as $|\frac{w_i}{w_j} - a_{ij}|$. With the consideration of

Table 3 Judgment certainty scale

Certainty of a judgment (%)	Term	Description
100	Certain	The reliability of a judgment is the highest
80	Confident	The decision-maker feels confident about this result; the judgment is reliable
60	Uncertain	The decision-maker has some doubt about the judgment, but it is still reliable
40	Unconfident	The reliability of the judgment is low
20	Hesitant	The judgment is not reliable

the certainty, the absolute difference needs to be multiplied by the corresponding certainty c_{ij} , to get the convinced absolute difference, that is, $|\frac{w_i}{w_j} - a_{ij}| \times c_{ij}$. The objective of CPC is then to minimize the sum of each convinced absolute difference z , and the optimized weightings can be determined by solving equation (3):

$$\text{Minimize } z = \sum_{i=1}^m \sum_{j=1}^m \left(\left| \frac{w_i}{w_j} - a_{ij} \right| \times c_{ij} \right) \quad (3)$$

Subject to

$$\sum_{i=1}^m w_i = 1$$

As for the AM selection, some criteria are measurable in numerical terms, such as Young’s modulus. These values are proportionally condensed under a 1–10 scale to compensate for the effect of the criteria’s different units. For some other criteria, when the numerical values are too small to compare with others, this process can be proportionally enlarging within a 1–10 scale. The condensed/enlarged values are expressed as R_{uv} , where u represents the numerical value of a criterion and v for an alternative. More details will be given in the next paragraph. However, for some criteria, R_{uv} is not available, such as the complexity of postprocessing. To optimize the AM selection, R_{uv} for the criteria such as postprocess complexity is also obtained by using the introduced CPC certainty method (comparing the alternatives in regard to the unavailable criteria). Finally, the overall score of an alternative v can be determined by equation (4):

$$S_v = \sum_{\nu=1}^m w_{\nu} R_{\nu v} \quad (4)$$

3.3 Consistency

Consistency is a key factor in evaluating MCDM tools. A high consistency means a reasonable application for a MCDM method. However, as a direct certainty embedded method,

CPC combines its pairwise comparison process with other MCDM tools. It will not affect the consistency, although it will lead to different criteria weightings and final alternative ranking. Because CPC is a new weighing MCDM tool, it does not change the pairwise comparison sequence, and it will inherit the consistency from the MCDM tool combined with.

3.4 Database

The AM processes database includes the characteristics of each potential AM technology and the features of the corresponding AM materials. The information on which the initial selection of material/process combinations is made should be available during the early decision-making process.

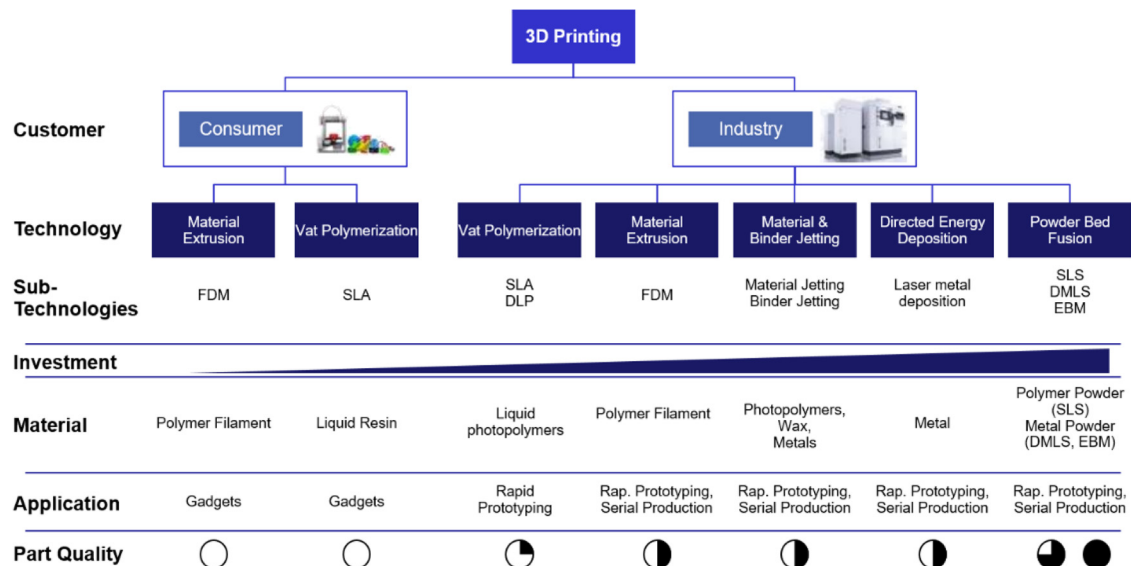
The database is still under development. However, the data that supports the following case studies is available. Please contact the authors to acquire access if necessary. Further, the data is tailored for each case in the following case studies. For example, because of the low production volume, the initial cost of printers is not considered, despite the fact that it can be essential for other situations. The 3D print parts can be purchased from 3D printing services companies, especially when low production volume. To get precise selection results, only related data is required for each application of the CPC AM selection. The information that is mandatory should rely on the decision-maker requirements.

The selection of appropriate processes for the AM of a particular part is based upon a matching of the required attributes of the part and the various process capabilities. Once the overall function of a part is determined, a list can be formulated giving the essential geometrical features, material properties and other attributes that are required. Figure 2 summarizes some commercial AM processes and their characteristics.

4. Case study

This section consists of two case studies: investment casting patterns and an adjustable pasta drying rack prototype to

Figure 2 Classification of commercial 3D printing processes and their characteristics



validate the CPC selection tool. The decision-maker’s specific requirements for each case study decide the selection criteria and constraints. The related data is collected to perform the CPC method separately. Finally, the AM technologies are ranked, and the most appropriate technology is recommended.

4.1 Investment casting patterns

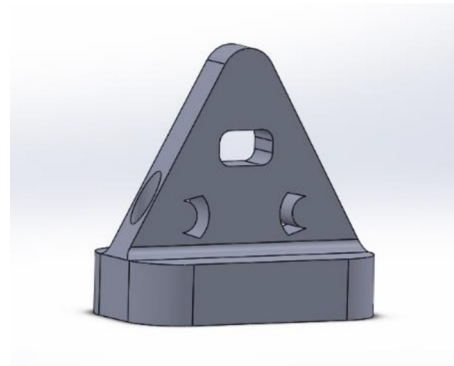
3D printing technologies have gradually become involved in investment casting, a manufacturing process based on lost-wax casting that can produce intricate near net-shape parts with isotropic properties. Investment casting employs master patterns that are similar in size to the final parts to make molds for the parts. The lead time for producing the pattern molds increases as their complexity increases, and the cost of the molds is high, especially when production volume is low. It is also difficult to produce highly complex molds, which limits the shape of the final products. AM is a good solution for this problem, as it can skip the production of molds and print the patterns directly. As a result, AM technologies are able to print highly complicated parts at a lower cost when production volume is low. In addition, AM offers greater dimensional accuracy and can reduce casting defects by 99.5% (Wang *et al.*, 2019b).

Figure 3 illustrates the steps involved in the conventional investment casting process (Serope Kalpakjian, 2008). Seven steps are used to produce the investment casting mold. Molten metal is then poured into the mold in Step 8. After solidification, the mold is removed and the metal takes the shape of the mold.

The illustrated part shown in Figure 4 is a customized joining structure that supports and connects machine components, is intended to be produced using investment casting patterns through a 3D printing process. Using the Visual Basic for Applications in MS Excel, the CPC method is developed to select the most suitable AM solution based upon the customer’s requirements. The data and CPC model for this case study are available; please contact the authors to acquire if needed.

For this application, the printed patterns will be melted and burnt out after making the molds (i.e. Step 7 in Figure 3). To

Figure 4 Configuration of the joining structure pattern



ensure that the melted pattern material can flow out of the casting molds, the customer indicated that its melting point should be lower than 1,400°F because the customer’s furnace temperature ranges to 1,500°F. The 100°F difference is selected to guarantee the flow and removal of the patterns. Because the customer did not want postprocessing to be complicated, the surface finish and dimensional accuracy of the process are critical to the selection process. The surface finish is measured by Ra, and the dimensional accuracy is measured by the dimensional tolerance $\pm a\%$.

Three different scenarios were developed to examine the performance of the proposed AM solution under different circumstances. The proposed constraints and criteria for each scenario are presented in Table 4. For example, in Scenario 1, the melting point is treated as both a constraint and a criterion, but in the other two scenarios, it is only considered as a constraint. Also, the printing speed is a constraint in Scenario 1 but a criterion in Scenario 2.

The CPC method can be combined with many pairwise comparison tools, such as the classic AHP, where the certainty of each comparison is applied to the weighting calculation. In this application, the BWM was selected because it is a brief process with high consistency. The BWM requires the selection of the most and least appropriate

Figure 3 Schematic illustration of main steps in the conventional investment casting process

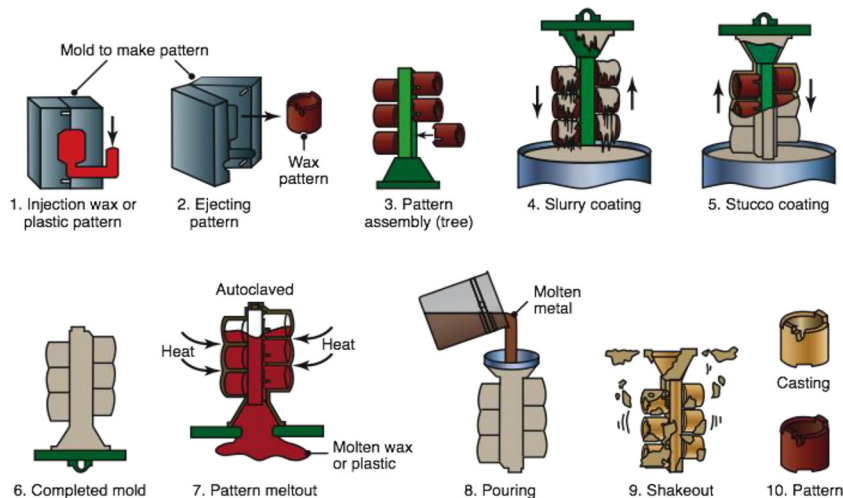


Table 4 Required constraints and criteria for the AM application selection

Property	Description	Scenario 1	Scenario 2	Scenario 3
Melting point	It must be lower than 1,400°F as required by the foundry company. The low melting point assists the flow of the melting pattern material	Constraint and Criterion	Criterion	Criterion
Young’s Modulus	This reflects the pattern’s stiffness. A high Young’s modulus can improve the precision of the molds made by the patterns	Criterion	Constraint	Criterion
Surface finish	The better surface finish of the patterns leads to a smoother surface of the cast parts	Criterion	Criterion	Criterion
Printing speed	This affects the production time of the final parts	Constraint	Criterion	Constraint and Criterion
Dimensional accuracy	This relates to the utilization of some machining processes that can improve dimensional accuracy	Criterion	Criterion	Criterion
Autoignition temperature	A low autoignition temperature facilitates the removal of the patterns in the investment casting process	Criterion	Criterion	Constraint
Cost	This refers to the cost of pattern production	Criterion	Criterion	Criterion

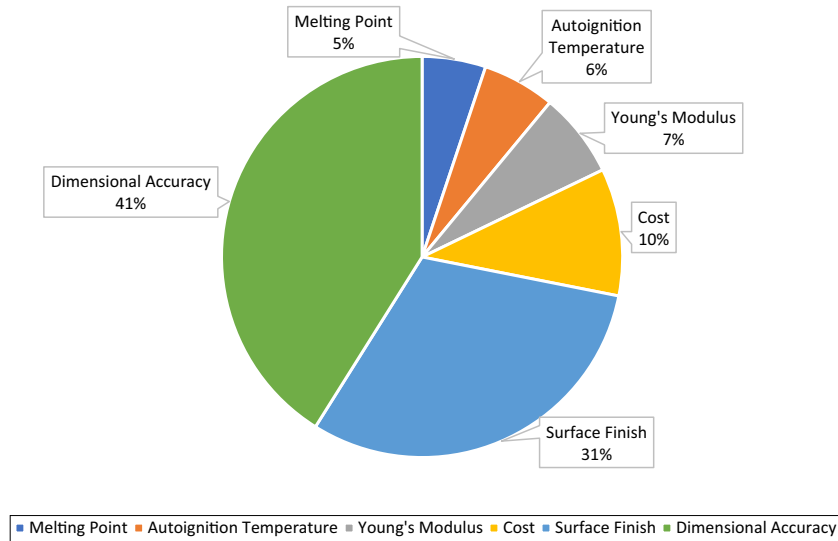
criteria and is used by the customer to compare the importance of each criterion with that of other criteria in a particular sequence. A decision-maker conducted the pairwise comparison following the BWM pairwise comparison order and provided certainty in their decision. The comparison results and the certainties are presented in [Table 5](#). Each comparison needs to be executed carefully.

By applying [equation \(1\)](#), the weight of each criterion can be calculated. As shown in [Figure 5](#), which illustrates the breakdown in importance for Scenario 1, dimensional accuracy was the most dominant criterion in this application, contributing up to 41% of the whole importance. The surface finish formed 31% of the total importance, which is predictable given that the surface finish and dimensional accuracy of the

Table 5 Certainty pairwise comparisons with the best worst method

(The best) Criterion	Criteria	Importance	Certainty (%)	(The worst) Criterion	Importance	Certainty (%)
Scenario 1						
Dimensional accuracy	Autoignition temperature	7	90	Melting point	2	90
	Cost	4	100		3	80
	Surface finish	3	90		6	70
	Dimensional accuracy	1	100		8	60
	Young’s Modulus	6	80		2	60
	Melting point	8	60		1	100
Scenario 2						
Cost	Autoignition temperature	9	90	Autoignition temperature	1	100
	Cost	1	100		9	80
	Surface finish	6	90		2	90
	Dimensional accuracy	5	90		2	90
	Printing speed	3	80		5	80
	Melting point	8	70		2	100
Scenario 3						
Printing speed	Young’s Modulus	8	100	Cost	2	90
	Cost	9	80		1	100
	Surface finish	3	90		5	100
	Dimensional accuracy	4	90		2	80
	Printing speed	1	100		9	80
	Melting point	7	60		2	70

Figure 5 Weighted importance of Scenario 1



patterns directly affect the quality of the final parts created by the investment casting process.

The collected numerical data were scaled to the same dimension, so the attributes with different units were comparable. We converted every nonnumerical attribute to numerical data for the purposes of this analysis. After determining the relevant criteria for this application, the tool created a tailored datasheet that contained only the related data. For this application, those data included printing speed and material costs, which can be costly, even though this is not a high-volume production situation. Printing speed not only affects the production rate, but a very high printing speed may have a negative effect on the accuracy and surface finish of the final part (Galantucci *et al.*, 2015; Miyanaji *et al.*, 2018). While other properties are not always decisive, they can also sway the ranking result in a specific scenario. Figure 6 shows the related attributes' performance during the CPC AM selection, which illustrates the importance of each criterion in different scenarios. In Scenario 1, the surface finish and dimensional accuracy are critical, but the cost is the most important for Scenario 2. For Scenario 3, printing speed shares the highest weight.

The optimized ranking results produced using equation (4) are shown in Figure 7, where the *x*-axis stands for each process under different scenarios and the *y*-axis stands for the CPC score. They show that in Scenario 1, the most appropriate method for printing the joining structure patterns would be VP, which can produce high-dimensional accuracy parts with a smooth surface finish. The recommended method for Scenario 2 is MJ technology, which can print wax parts that, in investment casting, will leave less residual in the mold after burning. Also, for Scenario 2, it shows that ME can also be a great solution where cost is a major issue for the decision-makers. The high printing speed of MJ makes it leading in the results for Scenario 3. The scores for BJ and directed energy deposition are extremely low because the low burning temperature materials used for those methods are still under development. The results also illustrate that plastic PBF shows potential for investment casting pattern making.

4.2 Adjustable pasta drying rack prototype

Rapid prototyping is still a primary application of AM technologies, even AM is getting more and more involved in production. The second case study is on producing a prototype

Figure 6 Importance of the properties in the CPC AM process selection

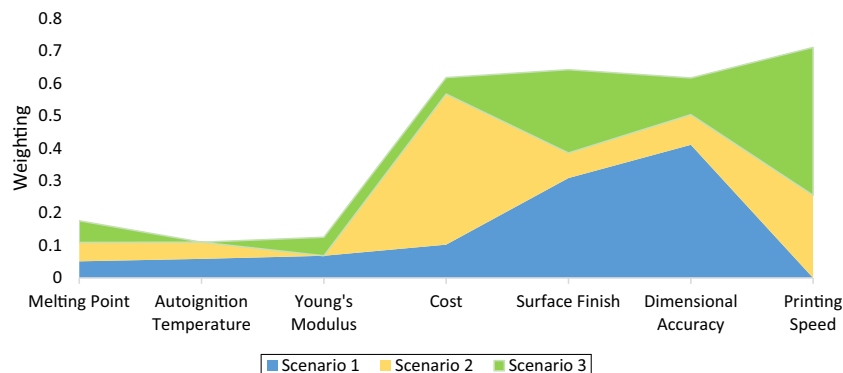


Figure 7 Optimized AM process selection ranking results

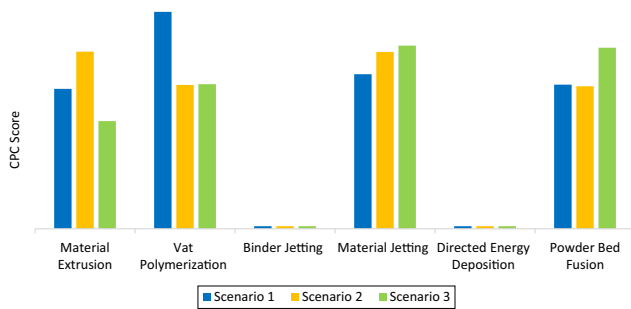


Figure 8 Adjustable pasta drying rack



for an adjustable pasta drying rack. As shown in Figure 8, the adjustable pasta drying rack can adjust the height by the threads on the body. Other advantages over traditional rack are it can disassemble when not used, saving the kitchen room and making it easy to clean. The decision-maker indicates that the mechanical properties are not crucial for this prototype. The essential criteria are surface finish, cost and accuracy. Because only one prototype is needed, it is not recommended to buy a 3D printer. The main cost of this application is the 3D printing material cost. Further, the final product will be made of plastic, so the material of this prototype is also plastic.

The CPC pairwise comparison is conducted following the BWM’s sequence, and the comparisons and CPC weightings are listed in Table 6. The VP is the leading technology for the pasta drying rack prototype, as shown in Figure 9, where the y-axis stands for the CPC score.

5. Comparing results with other decision-making tools

To demonstrate the influence of CPC, a comparative study is done by applying the results of the pairwise comparisons from the casting case study. Both CPC and BWM applications used the same normalization method. As shown in Table 7, the ranking results for CPC and BWM are listed for three scenarios. The employment of direct certainty affects the BWM ranking results, especially in competitive ranking, where some alternative scores are close, such as Scenario 2, the most suitable AM process is changed from MJ to ME. For Scenarios 1 and 3, the alternative scores change, but the rankings do not change much because some alternatives have stronger dominant potential under certain circumstances. Table 7 applies the same pairwise comparisons, and the corresponding certainty is added for CPC. It demonstrates how the ranking results will change with the same pairwise comparisons using certainty in decision-making and proves the effectiveness of CPC in MCDM. Similar changes could happen when CPC combines with other MCDM tools that use pairwise comparisons to find the weightings of criteria.

Figure 9 CPC result of pasta drying rack prototype

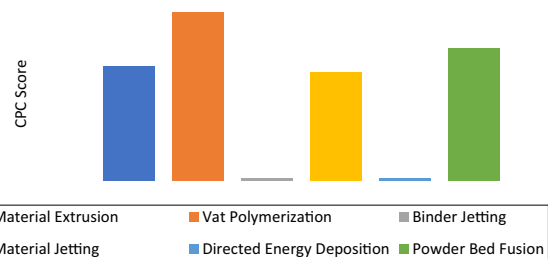


Table 6 CPC of drying rack prototype

(The best) Criterion	Criteria	Importance	Certainty (%)	(The worst) Criterion	Importance	Certainty (%)	Weighting
	Cost	3	80		3	90	0.28
Surface finish	Surface finish	1	100	Printing speed	7	100	0.42
	Dimensional accuracy	5	90		2	90	0.24
	Printing speed	7	100		1	100	0.06

Source: With the best worst comparison sequence

Table 7 CPC ranking and BWM ranking based on the casting case study pairwise comparison

Ranking	Scenario 1		Scenario 2		Scenario 3	
	CPC (score)	BWM (score)	CPC (score)	BWM (score)	CPC (score)	BWM (score)
1	VP (8.281)	VP (8.077)	MJ (6.761)	ME (6.949)	MJ (7.006)	MJ (6.906)
2	MJ (5.897)	MJ (6.330)	ME (6.760)	MJ (6.585)	PBF (6.903)	PBF (6.839)
3	PBF (5.503)	ME (5.839)	VP (5.480)	VP (5.609)	VP (5.507)	VP (5.784)
4	ME (5.344)	PBF (5.131)	PBF (5.452)	PBF (5.376)	ME (4.121)	ME (4.146)

Compared with other successful pairwise MCDM tools, such as AHP and BWM, CPC has its novel weighting determining process and precisely reflects the decision-maker's preferences. CPC can be applied to them and modify their results by including certainty in the weighting determining process. Some MCDM tools, such as fuzzy AHP, also deal with the uncertainty in decision-making by fuzzy numbers. However, CPC fixes the uncertainty by acquiring direct certainty from the decision-maker and employs this information to compensate for the uncertainty. In addition, CPC can be more convenient to apply because fuzzy numbers can take more time for a decision-maker to decide. Future studies should illustrate more differences between CPC and other MCDM tools.

Also, by observing the case study and Table 7, high direct certainty judgments can lead to a ranking that is close to the original BWM method. This observation needs to be further studied in the future.

6. Conclusion

This study offers a new 3D printing process selection tool that employs a CPC to analyze and optimize the selection process. The case study illustrates the various steps applied to the rapid investment casting of a given part. The proposed CPC algorithm consists of two parts: the criteria comparisons and the certainty level of each comparison. In essence, all these comparisons and their certainties constitute an information pool that can be used to comprehensively understand the user's decision-making process. A significant benefit of the CPC method over existing MCDM methods is that it calculates weightings that account for certainty levels. Using the certainty information, the CPC translates the decision-maker's requirements into numerical information to decide the criteria weightings. After obtaining those weightings, the CPC ranks the six main AM solutions and identifies the most suitable technology. The CPC method can also be easily combined with other MCDM tools to help them take certainty levels into account and support a more informed decision. The AM selection tool developed here inherits all the benefits of the CPC method and can solve complicated AM process selection problems at both the design and manufacturing stages. It is important to note that because the AM industry is fast developing, information about AM materials and technologies must be continually updated when commercializing promising AM technologies and releasing new AM materials. Future research may uncover further ways in which the AM process selection tool can be improved by combining it with other MCDM tools and obtaining the benefits of those other methods. However, the CPC requires more information to make a decision, and it can be extra work compared with other decision-making tools, even though the final result involves

certainty. Therefore, another future research could be finding a solution to simplify the CPC tool. In addition, the CPC could also help solve other decision-making problems whenever an alternative needs to be selected among all the alternatives, such as supply chain selection, logistics, sustainable manufacturing and education.

References

- Al-Harbi, K.M.A.-S. (2001), "Application of the AHP in project management", *International Journal of Project Management*, Vol. 19 No. 1, pp. 19-27.
- Allison, J., Sharpe, C. and Seepersad, C.C. (2019), "Powder bed fusion metrology for additive manufacturing design guidance", *Additive Manufacturing*, Vol. 25, pp. 239-251.
- Anand, M.B. (2018), "Application of fuzzy AHP – TOPSIS for ranking additive manufacturing processes for microfabrication", *Rapid Prototyping Journal*, Vol. 24, pp. 424-435.
- Armilotta, A. (2008), "Selection of layered manufacturing techniques by an adaptive AHP decision model", *Robotics and Computer-Integrated Manufacturing*, Vol. 24 No. 3, pp. 450-461.
- Avanzini, A., Battini, D. and Pandini, S. (2022), "Static and fatigue behavior in presence of notches for polyamide 12 (PA12) additively manufactured via multi jet fusion™ process", *International Journal of Fatigue*, Vol. 161, p. 106912.
- Badri Ahmadi, H., Kusi-Sarpong, S. and Rezaei, J. (2017), "Assessing the social sustainability of supply chains using best worst method", *Resources, Conservation and Recycling*, Vol. 126, pp. 99-106.
- Bártolo, P.J. and Gibson, I. (2011), "History of stereolithographic processes", in Bártolo, P.J. (Ed.), *Stereolithography: Materials, Processes and Applications*, Springer US, Boston, MA.
- Behzadian, M., Kazemzadeh, R.B., Albadvi, A. and Aghdasi, M. (2010), "PROMETHEE: a comprehensive literature review on methodologies and applications", *European Journal of Operational Research*, Vol. 200 No. 1, pp. 198-215.
- Behzadian, M., Khanmohammadi Otaghsara, S., Yazdani, M. and Ignatius, J. (2012), "A state-of-the-art survey of TOPSIS applications", *Expert Systems with Applications*, Vol. 39 No. 17, pp. 13051-13069.
- Bhatt, P.M., Kabir, A.M., Peralta, M., Bruck, H.A. and Gupta, S.K. (2019), "A robotic cell for performing sheet lamination-based additive manufacturing", *Additive Manufacturing*, Vol. 27, pp. 278-289.
- Borille, A., Gomes, J., Meyer, R. and Grote, K. (2010), "Applying decision methods to select rapid prototyping technologies", *Rapid Prototyping Journal*, Vol. 16 No. 1, pp. 50-62.

- Bourell, D., Kruth, J.P., Leu, M., Levy, G., Rosen, D., Beese, A.M. and Clare, A. (2017), "Materials for additive manufacturing", *CIRP Annals*, Vol. 66 No. 2, pp. 659-681.
- Brans, J.-P., Vincke, P. and Mareschal, B. (1986), "How to select and how to rank projects: the PROMETHEE method", *European Journal of Operational Research*, Vol. 24 No. 2, pp. 228-238.
- Byun, H.S. and Lee, K.H. (2005), "A decision support system for the selection of a rapid prototyping process using the modified TOPSIS method", *The International Journal of Advanced Manufacturing Technology*, Vol. 26 Nos 11/12, pp. 1338-1347.
- Carroll, B.E., Palmer, T.A. and Beese, A.M. (2015), "Anisotropic tensile behavior of Ti-6Al-4V components fabricated with directed energy deposition additive manufacturing", *Acta Materialia*, Vol. 87, pp. 309-320.
- Chen, X.-Y., Gao, Q., Wang, X.-L. and Li, X.-D. (2016), "Experimental design and parameter optimization for laser three-dimensional (3-D) printing", *Lasers in Engineering (Old City Publishing)*, Vol. 33 Nos 1/3, pp. 189-196.
- Chen, Z., Li, Z., Li, J., Liu, C., Lao, C., Fu, Y., Liu, C., Li, Y., Wang, P. and He, Y. (2019), "3D printing of ceramics: a review", *Journal of the European Ceramic Society*, Vol. 39 No. 4, pp. 661-687.
- Cheng, Y.-L., Chang, C.-H. and Kuo, C. (2020), "Experimental study on leveling mechanism for material-jetting-type color 3D printing", *Rapid Prototyping Journal*, Vol. 26 No. 1, pp. 11-20.
- Costa, S.F., Duarte, F.M. and Covas, J.A. (2017), "Estimation of filament temperature and adhesion development in fused deposition techniques", *Journal of Materials Processing Technology*, Vol. 245, pp. 167-179.
- Debroy, T., Wei, H.L., Zuback, J.S., Mukherjee, T., Elmer, J.W., Milewski, J.O., Beese, A.M., Wilson-Heid, A., De, A. and Zhang, W. (2018), "Additive manufacturing of metallic components – process, structure and properties", *Progress in Materials Science*, Vol. 92, pp. 112-224.
- Dhinakaran, V., Manoj Kumar, K.P., Bupathi Ram, P.M., Ravichandran, M. and Vinayagamoorthy, M. (2020), "A review on recent advancements in fused deposition modeling", *Materials Today: Proceedings*, Vol. 27.
- Díaz-Moreno, C.A., Lin, Y., Hurtado-Macías, A., Espalin, D., Terrazas, C.A., Murr, L.E. and Wicker, R.B. (2019), "Binder jetting additive manufacturing of aluminum nitride components", *Ceramics International*, Vol. 45 No. 11, pp. 13620-13627.
- Dilag, J., Chen, T., Li, S. and Bateman, S.A. (2019), "Design and direct additive manufacturing of three-dimensional surface micro-structures using material jetting technologies", *Additive Manufacturing*, Vol. 27, pp. 167-174.
- Do, T., Kwon, P. and Shin, C.S. (2017), "Process development toward full-density stainless steel parts with binder jetting printing", *International Journal of Machine Tools and Manufacture*, Vol. 121, pp. 50-60.
- Emovon, I. and Oghenenyerovwho, O.S. (2020), "Application of MCDM method in material selection for optimal design: a review", *Results in Materials*, Vol. 7, p. 100115.
- Galantucci, L.M., Bodi, I., Kacani, J. and Lavecchia, F. (2015), "Analysis of dimensional performance for a 3D open-source printer based on fused deposition modeling technique", *Procedia CIRP*, Vol. 28, pp. 82-87.
- Gaynor, A.T., Meisel, N.A., Williams, C.B. and Guest, J.K. (2014), "Multiple-material topology optimization of compliant mechanisms created via PolyJet three-dimensional printing", *Journal of Manufacturing Science and Engineering*, Vol. 136 No. 6, p. 10.
- Gibson, I., Rosen, D. and Stucker, B. (2015), "Directed energy deposition processes", *Additive Manufacturing Technologies: 3D Printing, Rapid Prototyping, and Direct Digital Manufacturing*, Springer, New York, NY.
- Gonzalez, J.A., Mireles, J., Lin, Y. and Wicker, R.B. (2016), "Characterization of ceramic components fabricated using binder jetting additive manufacturing technology", *Ceramics International*, Vol. 42 No. 9, pp. 10559-10564.
- Gordon, J., Hochhalter, J., Haden, C. and Harlow, D.G. (2019), "Enhancement in fatigue performance of metastable austenitic stainless steel through directed energy deposition additive manufacturing", *Materials & Design*, Vol. 168, p. 107630.
- Gupta, H. (2018), "Evaluating service quality of airline industry using hybrid best worst method and VIKOR", *Journal of Air Transport Management*, Vol. 68, pp. 35-47.
- Haley, J.C., Zheng, B., Bertoli, U.S., Dupuy, A.D., Schoenung, J.M. and Lavernia, E.J. (2019), "Working distance passive stability in laser directed energy deposition additive manufacturing", *Materials & Design*, Vol. 161, pp. 86-94.
- Herzog, D., Seyda, V., Wycisk, E. and Emmelmann, C. (2016), "Additive manufacturing of metals", *Acta Materialia*, Vol. 117, pp. 371-392.
- Huang, J.-J., Tzeng, G.-H. and Liu, H.-H. (2009), *A Revised VIKOR Model for Multiple Criteria Decision Making – The Perspective of Regret Theory*, Springer, Berlin, Heidelberg, pp. 761-768.
- Hull, C.W. (2015), "The birth of 3D printing", *Research-Technology Management*, Vol. 58, pp. 25-30.
- Ishizaka, A. and Labib, A. (2011), "Review of the main developments in the analytic hierarchy process", *Expert Systems with Applications*, Vol. 38, pp. 14336-14345.
- Jahan, A., Mustapha, F., Ismail, M.Y., Sapuan, S.M. and Bahraminasab, M. (2011), "A comprehensive VIKOR method for material selection", *Materials & Design*, Vol. 32 No. 3, pp. 1215-1221.
- Javidani, M., Arreguin-Zavala, J., Danovitch, J., Tian, Y. and Brochu, M. (2017), "Additive manufacturing of AlSi10Mg alloy using direct energy deposition: microstructure and hardness characterization", *Journal of Thermal Spray Technology*, Vol. 26 No. 4, pp. 587-597.
- Kadkhoda-Ahmadi, S., Hassan, A. and Asadollahi-Yazdi, E. (2019), "Process and resource selection methodology in design for additive manufacturing", *The International Journal of Advanced Manufacturing Technology*, Vol. 104 Nos 5/8, pp. 2013-2029.
- Khairallah, S.A., Anderson, A.T., Rubenchik, A. and King, W.E. (2016), "Laser powder-bed fusion additive manufacturing: physics of complex melt flow and formation mechanisms of pores, spatter, and denudation zones", *Acta Materialia*, Vol. 108, pp. 36-45.
- Kheybari, S., Rezaie, F.M. and Farazmand, H. (2020), "Analytic network process: an overview of applications", *Applied Mathematics and Computation*, Vol. 367, p. 124780.

- Khrais, S., Al-Hawari, T. and Al-Araidah, O. (2011), "A fuzzy logic application for selecting layered manufacturing techniques", *Expert Systems with Applications*, Vol. 38 No. 8, pp. 10286-10291.
- King, W.E., Barth, H.D., Castillo, V.M., Gallegos, G.F., Gibbs, J.W., Hahn, D.E., Kamath, C. and Rubenchik, A.M. (2014), "Observation of keyhole-mode laser melting in laser powder-bed fusion additive manufacturing", *Journal of Materials Processing Technology*, Vol. 214 No. 12, pp. 2915-2925.
- Lee, J.-Y., An, J. and Chua, C.K. (2017), "Fundamentals and applications of 3D printing for novel materials", *Applied Materials Today*, Vol. 7, pp. 120-133.
- Liao, S., Wu, M.-J., Huang, C.-Y., Kao, Y.-S. and Lee, T.-H. (2014), "Evaluating and enhancing three-dimensional printing service providers for rapid prototyping using the DEMATEL based network process and VIKOR", *Mathematical Problems in Engineering*, Vol. 2014.
- Lima Junior, F.R., Osiro, L. and Carpinetti, L.C.R. (2014), "A comparison between fuzzy AHP and fuzzy TOPSIS methods to supplier selection", *Applied Soft Computing*, Vol. 21, pp. 194-209.
- Liu, W., Zhu, Z. and Ye, S. (2020), "A decision-making methodology integrated in product design for additive manufacturing process selection", *Rapid Prototyping Journal*, Vol. 26 No. 5, pp. 895-909.
- Lokesh, K. and Jain, P. (2010), "Selection of rapid prototyping technology", *Advances in Production Engineering & Management*, Vol. 5, pp. 75-84.
- Lowther, M., Louth, S., Davey, A., Hussain, A., Ginestra, P., Carter, L., Eisenstein, N., Grover, L. and Cox, S. (2019), "Clinical, industrial, and research perspectives on powder bed fusion additively manufactured metal implants", *Additive Manufacturing*, Vol. 28, pp. 565-584.
- Luo, C., Wang, X., Migler, K.B. and Seppala, J.E. (2020), "Upper bound of feed rates in thermoplastic material extrusion additive manufacturing", *Additive Manufacturing*, Vol. 32, p. 101019.
- Macdonald, E. and Wicker, R. (2016), "Multiprocess 3D printing for increasing component functionality", *Science*, Vol. 353 No. 6307, p. aaf2093.
- Macharis, C., Springael, J., De Brucker, K. and Verbeke, A. (2004), "PROMETHEE and AHP: the design of operational synergies in multicriteria analysis: strengthening PROMETHEE with ideas of AHP", *European Journal of Operational Research*, Vol. 153 No. 2, pp. 307-317.
- Mahesh, M., Fuh, J.Y.H., Wong, Y.S. and Loh, H.T. (2005), "Benchmarking for decision making in rapid prototyping systems", *IEEE International Conference on Automation Science and Engineering*, 1-2 Aug. 2005, pp. 19-24.
- Mançanares, C.G., de Zancul, S., Cavalcante Da Silva, J. and Cauchick Miguel, P.A. (2015), "Additive manufacturing process selection based on parts' selection criteria", *The International Journal of Advanced Manufacturing Technology*, Vol. 80 Nos 5/8, pp. 1007-1014.
- Mardani, A., Zavadskas, E.K., Govindan, K., Amat Senin, A. and Jusoh, A. (2016), "VIKOR technique: a systematic review of the state of the art literature on methodologies and applications", *Sustainability*, Vol. 8 No. 1, p. 37.
- Marttunen, M., Lienert, J. and Belton, V. (2017), "Structuring problems for multi-criteria decision analysis in practice: a literature review of method combinations", *European Journal of Operational Research*, Vol. 263 No. 1, pp. 1-17.
- Mele, M., Campana, G., Lenzi, F. and Cimatti, B. (2019a), "Optimisation of build orientation to achieve minimum environmental impact in stereo-lithography", *Procedia Manufacturing*, Vol. 33, pp. 145-152.
- Mele, M., Campana, G. and Monti, G.L. (2019b), "Modelling of the capillarity effect in multi jet fusion technology", *Additive Manufacturing*, Vol. 30, p. 100879.
- Mele, M., Pisaneschi, G., Campana, G., Zucchelli, A. and Ciotti, M. (2022), "Effect of selected process parameters on dimensional accuracy in arburg plastic freeforming", *Rapid Prototyping Journal*, Vol. 28 No. 9.
- Meteyer, S., Xu, X., Perry, N. and Zhao, Y.F. (2014), "Energy and material flow analysis of binder-jetting additive manufacturing processes", *Procedia CIRP*, Vol. 15, pp. 19-25.
- Miyajima, H., Momenzadeh, N. and Yang, L. (2018), "Effect of printing speed on quality of printed parts in binder jetting process", *Additive Manufacturing*, Vol. 20, pp. 1-10.
- Moslem, S., Farooq, D., Ghorbanzadeh, O. and Blaschke, T. (2020), "Application of the AHP-BWM model for evaluating driver behavior factors related to road safety: a case study for Budapest", *Symmetry*, Vol. 12 No. 2, p. 243.
- Ngo, T.D., Kashani, A., Imbalzano, G., Nguyen, K.T.Q. and Hui, D. (2018), "Additive manufacturing (3D printing): a review of materials, methods, applications and challenges", *Composites Part B: Engineering*, Vol. 143, pp. 172-196.
- Norfolk, M. and Johnson, H. (2015), "Solid-state additive manufacturing for heat exchangers", *JOM*, Vol. 67 No. 3, pp. 655-659.
- Oprić, S. and Tzeng, G.-H. (2004), "Compromise solution by MCDM methods: a comparative analysis of VIKOR and TOPSIS", *European Journal of Operational Research*, Vol. 156 No. 2, pp. 445-455.
- Oprić, S. and Tzeng, G.-H. (2007), "Extended VIKOR method in comparison with outranking methods", *European Journal of Operational Research*, Vol. 178 No. 2, pp. 514-529.
- Qi Zhang, H.Y., Yu, Z., Gao, J., Wang, X., Lin, H. and Shen, B.O. (2018), "Energy-exergy analysis and energy efficiency improvement of coal-fired industrial boilers based on thermal test data", *Applied Thermal Engineering*, Vol. 144, pp. 614-627.
- Qin, Y., Qi, Q., Scott, P.J. and Jiang, X. (2020), "An additive manufacturing process selection approach based on fuzzy archimedean weighted power bonferroni aggregation operators", *Robotics and Computer-Integrated Manufacturing*, Vol. 64, p. 101926.
- Ramazani, H. and Kami, A. (2022), "Metal FDM, a new extrusion-based additive manufacturing technology for manufacturing of metallic parts: a review", *Progress in Additive Manufacturing*, Vol. 7 No. 4, pp. 609-626.
- Rao, R.V. and Padmanabhan, K.K. (2007), "Rapid prototyping process selection using graph theory and matrix approach", *Journal of Materials Processing Technology*, Vol. 194 Nos 1/3, pp. 81-88.
- Rezaei, J. (2015), "Best-worst multi-criteria decision-making method", *Omega*, Vol. 53, pp. 49-57.

- Rezaei, J. (2016), “Best-worst multi-criteria decision-making method: some properties and a linear model”, *Omega*, Vol. 64, pp. 126-130.
- Saaty, T.L. (1990), “How to make a decision: the analytic hierarchy process”, *European Journal of Operational Research*, Vol. 48 No. 1, pp. 9-26.
- Saaty, T.L. (2001), “The seven pillars of the analytic hierarchy process”, in Köksalan, M. and Zionts, S. (Eds), *Multiple Criteria Decision Making in the New Millennium: Proceedings of the Fifteenth International Conference on Multiple Criteria Decision Making (MCDM) Ankara, Turkey, July 10–14, 2000*, Springer, Berlin, Heidelberg.
- Saaty, T.L. (1988), *What is the Analytic Hierarchy Process?* Springer, Berlin, Heidelberg, pp. 109-121.
- Saaty, T.L. and Vargas, L.G. (2013), “The analytic network process”, *Decision Making with the Analytic Network Process: Economic, Political, Social and Technological Applications with Benefits, Opportunities, Costs and Risks*, Springer US, Boston, MA.
- Salimi, N. and Rezaei, J. (2016), “Measuring efficiency of university-industry Ph.D. projects using best worst method”, *Scientometrics*, Vol. 109 No. 3, pp. 1911-1938.
- Santoliquido, O., Colombo, P. and Ortona, A. (2019), “Additive manufacturing of ceramic components by digital light processing: a comparison between the ‘bottom-up’ and the ‘top-down’ approaches”, *Journal of the European Ceramic Society*, Vol. 39 No. 6, pp. 2140-2148.
- Savolainen, J. and Collan, M. (2020), “How additive manufacturing technology changes business models? – review of literature”, *Additive Manufacturing*, Vol. 32, p. 101070.
- Serope Kalpakjian, S.R.S. (2008), *Manufacturing Processes for Engineering Materials*, 5th Edition, Pearson, Upper Saddle River, NJ.
- Shafraneck, R.T., Millik, S.C., Smith, P.T., Lee, C.-U., Boydston, A.J. and Nelson, A. (2019), “Stimuli-responsive materials in additive manufacturing”, *Progress in Polymer Science*, Vol. 93, pp. 36-67.
- Shi, R., Khairallah, S.A., Roehling, T.T., Heo, T.W., McKeown, J.T. and Matthews, M.J. (2020), “Microstructural control in metal laser powder bed fusion additive manufacturing using laser beam shaping strategy”, *Acta Materialia*, Vol. 184, pp. 284-305.
- Shih, H.-S., Shyr, H.-J. and Lee, E.S. (2007), “An extension of TOPSIS for group decision making”, *Mathematical and Computer Modelling*, Vol. 45 Nos 7/8, pp. 801-813.
- Sochol, R.D., Sweet, E., Glick, C.C., Venkatesh, S., Avetisyan, A., Ekman, K.F., Raulinaitis, A., Tsai, A., Wienkers, A., Korner, K., Hanson, K., Long, A., Hightower, B.J., Slatton, G., Burnett, D.C., Massey, T.L., Iwai, K., Lee, L.P., Pister, K.S.J. and Lin, L. (2016), “3D printed microfluidic circuitry via multijet-based additive manufacturing”, *Lab on a Chip*, Vol. 16 No. 4, pp. 668-678.
- Stender, M.E., Beghini, L.L., Sugar, J.D., Veilleux, M.G., Subia, S.R., Smith, T.R., Marchi, C.W.S., Brown, A.A. and Dagel, D.J. (2018), “A thermal-mechanical finite element workflow for directed energy deposition additive manufacturing process modeling”, *Additive Manufacturing*, Vol. 21, pp. 556-566.
- Tofail, S.A.M., Koumoulos, E.P., Bandyopadhyay, A., Bose, S., O’donoghue, L. and Charitidis, C. (2018), “Additive manufacturing: scientific and technological challenges, market uptake and opportunities”, *Materials Today*, Vol. 21 No. 1, pp. 22-37.
- Tumbleston, J.R., Shirvanyants, D., Ermoshkin, N., Januszewicz, R., Johnson, A.R., Kelly, D., Chen, K., Pinschmidt, R., Rolland, J.P., Ermoshkin, A., Samulski, E. T. and Desimone, J.M. (2015), “Continuous liquid interface production of 3D objects”, *Science*, Vol. 347 No. 6228, p. 1349.
- Vahdani, B., Mousavi, S.M. and Tavakkoli-Moghaddam, R. (2011), “Group decision making based on novel fuzzy modified TOPSIS method”, *Applied Mathematical Modelling*, Vol. 35 No. 9, pp. 4257-4269.
- Vdovin, R., Tomilina, T., Smelov, V. and Laktionova, M. (2017), “Implementation of the additive PolyJet technology to the development and fabricating the samples of the acoustic metamaterials”, *Procedia Engineering*, Vol. 176, pp. 595-599.
- Velasquez, M. and Hester, P.T. (2013), “An analysis of multi-criteria decision making methods”, *International Journal of Operations Research*, Vol. 10, pp. 56-66.
- Vimal, K.E.K. (2016), “Rapid prototyping process selection using multi criteria decision making considering environmental criteria and its decision support system”, *Rapid Prototyping Journal*, Vol. 22, pp. 225-250.
- Vinodh, S., Nagaraj, S. and Girubha, J. (2014), “Application of fuzzy VIKOR for selection of rapid prototyping technologies in an agile environment”, *Rapid Prototyping Journal*, Vol. 20 No. 6, pp. 523-532.
- Vock, S., Klöden, B., Kirchner, A., Weißgärber, T. and Kieback, B. (2019), “Powders for powder bed fusion: a review”, *Progress in Additive Manufacturing*, Vol. 4 No. 4, pp. 383-397.
- Wang, Y. (2017), “Selection of additive manufacturing processes”, *Rapid Prototyping Journal*, Vol. 23 No. 2, pp. 434-447.
- Wang, Y. (2018), “A decision support system for additive manufacturing process selection using a hybrid multiple criteria decision-making method”, *Rapid Prototyping Journal*, Vol. 24 No. 9, pp. 1544-1553.
- Wang, J.-C., Dommatti, H. and Hsieh, S.-J. (2019a), “Review of additive manufacturing methods for high-performance ceramic materials”, *The International Journal of Advanced Manufacturing Technology*, Vol. 103 Nos 5/8, pp. 2627-2647.
- Wang, J., Sama, S.R., Lynch, P.C. and Manogharan, G. (2019b), “Design and topology optimization of 3D-Printed wax patterns for rapid investment casting”, *Procedia Manufacturing*, Vol. 34, pp. 683-694.
- Weng, Z., Wang, J., Senthil, T. and Wu, L. (2016), “Mechanical and thermal properties of ABS/montmorillonite nanocomposites for fused deposition modeling 3D printing”, *Materials & Design*, Vol. 102, pp. 276-283.
- Wheat, E., Vlasea, M., Hinebaugh, J. and Metcalfe, C. (2018), “Sinter structure analysis of titanium structures fabricated via binder jetting additive manufacturing”, *Materials & Design*, Vol. 156, pp. 167-183.
- Xiong, S. and Chen, X. (2021), “Simulation and experimental research of an effective SAR multilayer interlaced micromixer based on Koch fractal geometry”, *Microfluidics and Nanofluidics*, Vol. 25 No. 11, p. 92.

- Yang, L. and Miyanaji, H. (2017), "Ceramic additive manufacturing: a review of current status and challenges", *Proceeding of 28th Annual International Solid Freeform Fabrication Symposium 2017*, pp. 652-679.
- Yang, Y., Li, L. and Zhao, J. (2019), "Mechanical property modeling of photosensitive liquid resin in stereolithography additive manufacturing: bridging degree of cure with tensile strength and hardness", *Materials & Design*, Vol. 162, pp. 418-428.
- Yap, Y.L., Wang, C., Sing, S.L., Dikshit, V., Yeong, W.Y. and Wei, J. (2017), "Material jetting additive manufacturing: an experimental study using designed metrological benchmarks", *Precision Engineering*, Vol. 50, pp. 275-285.
- Zaman, U.K.U., Rivette, M., Siadat, A. and Mousavi, S.M. (2018), "Integrated product-process design: material and manufacturing process selection for additive manufacturing using multi-criteria decision making", *Robotics and Computer-Integrated Manufacturing*, Vol. 51, pp. 169-180.
- Zhang, Y. (2014), "An integrated decision-making model for multi-attributes decision-making (MADM) problems in additive manufacturing process planning", *Rapid Prototyping Journal*, Vol. 20 No. 5, pp. 377-389.

- Zheng, P., Wang, Y., Xu, X. and Xie, S.Q. (2017), "A weighted rough set based fuzzy axiomatic design approach for the selection of AM processes", *The International Journal of Advanced Manufacturing Technology*, Vol. 91 Nos 5/8, pp. 1977-1990.
- Zhou, B. and Chen, C. (2010), "Multi-level fuzzy comprehensive evaluations for rapid manufacturing systems", *2010 Seventh International Conference on Fuzzy Systems and Knowledge Discovery*, 10-12 Aug. 2010, pp. 1315-1319.
- Zyoud, S.H. and Fuchs-Hanusch, D. (2017), "A bibliometric-based survey on AHP and TOPSIS techniques", *Expert Systems with Applications*, Vol. 78, pp. 158-181.

Further reading

- Cooke, M.N., Fisher, J.P., Dean, D., Rimmnac, C. and Mikos, A.G. (2003), "Use of stereolithography to manufacture critical-sized 3D biodegradable scaffolds for bone ingrowth", *Journal of Biomedical Materials Research. Part B, Applied Biomaterials*, Vol. 64 No. 2, pp. 65-69.

Corresponding author

Diqian Ren can be contacted at: rend01@udayton.edu