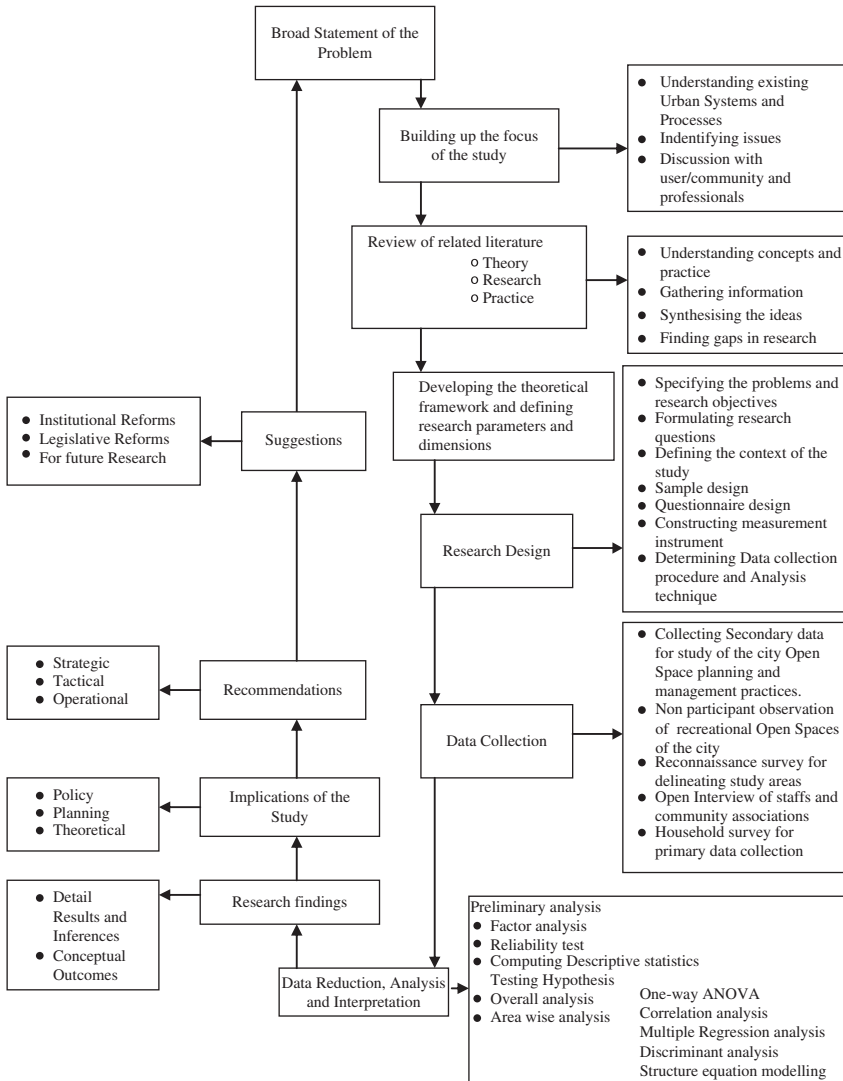


# Appendix B



**Figure B1: Research Methodology.**

**Table B1:** Place Use Measurement.

|                  | Dimensions          | Question Items                                  |
|------------------|---------------------|---|
| <b>Place Use</b> | Physical activities | Strolling                                       |
|                  |                     | Jogging   |
|                  |                     | Exercising                                      |
|                  | Informal activities | Sporting activities                             |
|                  |                     | Reading   |
|                  |                     | Relaxing  |
|                  | Quiet activities    | Meditation, Yoga, etc.                          |
|                  |                     | Family outing                                   |
|                  |                     | Social gathering                                |
|                  | Social activities   | Organized gatherings (meeting, discourse, etc.) |
|                  |                     | Cultural programs                               |

**Table B2:** Place Quality Measurement.

|                      | Dimensions                               | Question Items                    |
|----------------------|--|-----------------------------------|
| <b>Place Quality</b> | Spatial integration                      | Accessibility                     |
|                      |  | Contributing greenery             |
|                      |  | Location                          |
|                      | Natural features                         | Healthy recreation                |
|                      |  | Wastage of valuable land          |
|                      |  | Trees, shrubs                     |
|                      | Built features and atmospheric qualities | Manicured lawn                    |
|                      |  | Flower gardens                    |
|                      |  | Earth mounds                      |
|                      |  | Walkways                          |
|                      | Influence of adjoining use               | Recreational facilities           |
|                      |  | Cleanliness and maintenance       |
|                      |  | Atmospheric qualities             |
|                      |  | Intensity of traffic              |
|                      |  | Impact of surrounding built space |
|                      |  | Commercial activities             |

**Table B3: Place Attachment Measurement.**

|                         | Dimensions       | Question Items                                   |
|-------------------------|------------------|--|
| <b>Place Attachment</b> |                  | Miss the park if moved to another locality       |
|                         | Place identity   | Expressing happiness for the presence of park    |
|                         | Place dependence | Proud for staying in a green neighborhood        |
|                         |                  | No commitment with the park                      |
|                         |                  | Bring children to the park                       |
|                         | Social bonding   | Satisfaction out of visiting the park            |
|                         |                  | Provide recreational facility                    |
|                         |                  | Frequent visit to the park is acceptable         |
|                         |                  | Feeling of home                                  |
|                         |                  | Familiarity with plants and places in the park   |
|                         |                  | Memories about the park                          |
|                         |                  | Connection with different activities in the park |
|                         |                  | Connection with people coming to the park        |

**Table B4: Place Management Measurement.**

|                         | Dimensions               | Question Items   |
|-------------------------|--------------------------|--|
| <b>Place Management</b> |                          | Attending residential welfare association meeting          |
|                         | Environmental activities | Maintaining greenery                                       |
|                         |                          | Maintaining other landscape features                       |
|                         |                          | Cleaning litter  |
|                         | Participative attitude   | Regulating use of park                                     |
|                         |                          | Attitude for managing vegetation                           |
|                         |                          | Maintenance of walkway                                     |
|                         |                          | Maintenance of playing equipments and other minor features |

Table B4: (Continued)

| Dimensions | Question Items              |
|------------|-----------------------------|
|            | Managing park workers       |
|            | Managing use of park        |
|            | Facility management of park |
|            | Litter management           |

INTERVIEW SCHEDULE

Interview schedule (structured) prepared for the field study undertaken in the selected residential neighborhoods in the city of Bhubaneswar.

QUESTIONNAIRE

Give a single answer for each items/questions/statements by a tick mark

1. How often do you go to this neighborhood park for pursuing the following activities?

| Activities   | Almost<br>Daily | At least<br>Once or<br>Twice in<br>a Week | Weekends<br>or<br>Holidays | Occasionally<br>(Once in a<br>Month or<br>Less) | Rarely |
|--|-----------------|---|----------------------------|---|--------|
| Jogging  |                 |   |                            |   |        |
| Exercising   |                 |   |                            |   |        |
| Sporting<br>activities                                   |                 |   |                            |   |        |
| Strolling  |                 |   |                            |   |        |
| Relaxing   |                 |   |                            |   |        |
| Family outing  |                 |   |                            |   |        |
| Reading  |                 |   |                            |   |        |
| Meditation and<br>yoga                                   |                 |   |                            |   |        |
| Social gathering   |                 |   |                            |   |        |
| Organized<br>gatherings<br>(meeting,<br>discourse, etc.) |                 |   |                            |   |        |
| Cultural<br>programs                                     |                 |   |                            |   |        |

2. Give your rating for the following elements of this neighborhood park?

| Elements  | Very Good | Good | Moderate | Bad | Very Bad |
|---|-----------|------|----------|-----|----------|
| Vegetation (trees and shrubs inside the park)                           |           |      |          |     |          |
| Lawns   |           |      |          |     |          |
| Flower gardens  |           |      |          |     |          |
| Walkways  |           |      |          |     |          |
| Mounds and slopes   |           |      |          |     |          |
| Gates, fences, sitting space, drinking water facility, parking facility |           |      |          |     |          |
| Cleanliness and maintenance   |           |      |          |     |          |
| Air quality (pollution near the park)                                   |           |      |          |     |          |

3. What is your opinion regarding the following statements?

| Statements  | Strongly Agree | Agree | Neutral | Disagree | Strongly Disagree |
|---|----------------|-------|---------|----------|-------------------|
| The volume of traffic near the park is less               |                |       |         |          |                   |
| The park looks clumsy being surrounded by buildings       |                |       |         |          |                   |
| Shops near the park make the area noisy                   |                |       |         |          |                   |
| It is possible to walk down safely to the park            |                |       |         |          |                   |
| The park is well located in the neighborhood              |                |       |         |          |                   |
| The park makes the neighborhood look green and beautiful  |                |       |         |          |                   |
| The park provides healthy recreation for the neighborhood |                |       |         |          |                   |
| The park is wastage of valuable land in the neighborhood  |                |       |         |          |                   |

4. What is your opinion regarding the following statements?

| Statements  | Strongly Agree | Agree | Neutral | Disagree | Strongly Disagree |
|---|----------------|-------|---------|----------|-------------------|
| I would miss the park if I moved to another locality          |                |       |         |          |                   |
| Presence of this park makes me happy                          |                |       |         |          |                   |
| I like to tell people that I stay close to the park           |                |       |         |          |                   |
| I feel no commitment to this park                             |                |       |         |          |                   |
| I will (do) bring my children to this place                   |                |       |         |          |                   |
| I get satisfaction out of visiting this park                  |                |       |         |          |                   |
| This park offers me the type of recreation I want to do       |                |       |         |          |                   |
| I don't get bored by visiting the park very often             |                |       |         |          |                   |
| This park feels like home to me                               |                |       |         |          |                   |
| I enjoy being familiar with the plants and places in the park |                |       |         |          |                   |
| I have good memories about the park                           |                |       |         |          |                   |
| I have connection with different events in the park           |                |       |         |          |                   |
| I have special connection with the people who come here       |                |       |         |          |                   |

5. How often do you get involved in the following management activities related to your neighborhood park?

| Management Activity   | Almost<br>Daily | At<br>Least<br>Once or<br>a Week | Weekends<br>or<br>Holidays | Occasionally<br>(Once in a<br>Month or<br>Less) | Rarely |
|---|-----------------|----------------------------------|----------------------------|---|--------|
| Attending residential<br>welfare association<br>meetings  |                 |                                  |                            |   |        |
| Maintenance of<br>vegetation  |                 |                                  |                            |   |        |
| Maintenance of other<br>features like fence,<br>gate, playing<br>amenities, and seating<br>spaces in the park |                 |                                  |                            |   |        |
| Cleaning of litter  |                 |                                  |                            |   |        |
| Regulating use of park  |                 |                                  |                            |   |        |

6. What is your opinion regarding participating in the following aspects of your neighborhood park?

| Management Activity   | Strongly<br>Agree | Agree | Neutral | Disagree | Strongly<br>Disagree |
|---|-------------------|-------|---------|----------|----------------------|
| Management of vegetation<br>(like removing dead or<br>dying trees, mowing grass<br>next to paths and pruning<br>shrubs along paths) |                   |       |         |          |                      |
| Maintenance walkways  |                   |       |         |          |                      |
| Maintenance of playing<br>equipments and other<br>minor features  |                   |       |         |          |                      |
| Managing park workers   |                   |       |         |          |                      |
| Managing use of park  |                   |       |         |          |                      |
| Facility management like<br>drinking water facility,<br>toilet, and any other<br>recreational amenities                             |                   |       |         |          |                      |
| Litter management   |                   |       |         |          |                      |

7. Give your choice to participate in your neighborhood park related activities in the following levels. (You can give more than one choice in this table.)

---

**No participation**

I am not interested to participate in any activities related to the park

**Consultation**

I like to give suggestions/opinion about different development and maintenance schemes related to the park.

**Active involvement**

I like to be actively involved in the making of plans and proposals for the development and management to be undertaken for the park

**Decision making**

I like to participate in the meeting with the Residential welfare association and the government department to decide on the above proposals

---

8. Please give your personal profile

---

**Personal profile**

---

|                               |                          |
|-------------------------------|--------------------------|
| <b>Age</b>                    | 18–35 yr                 |
|                               | 36–45 yr                 |
|                               | 46–55 yr                 |
|                               | 56–75 yr                 |
| <b>Gender</b>                 | Male                     |
|                               | Female                   |
| <b>Educational background</b> | Primary                  |
|                               | Secondary                |
|                               | Intermediate             |
|                               | Graduation               |
| <b>Occupational status</b>    | Student                  |
|                               | Searching for Employment |
|                               | Employed                 |
|                               | Retired                  |
|                               | House wife               |



(Continued)

|                                     |                  |
|-------------------------------------|------------------|
| Personal profile                    |                  |
| Average monthly income              | Up to Rs 3,000   |
|                                     | 3,001 to 5,000   |
|                                     | 5,001 to 10,000  |
|                                     | 10,001 to 20,000 |
|                                     | More than 20,000 |
| Duration of living in this locality | Less than 6 mo   |
|                                     | 6 mo to 1 yr     |
|                                     | 1–3 yr           |
|                                     | More than 3 yr   |
| Ownership status                    | Tenant           |
|                                     | Owner            |